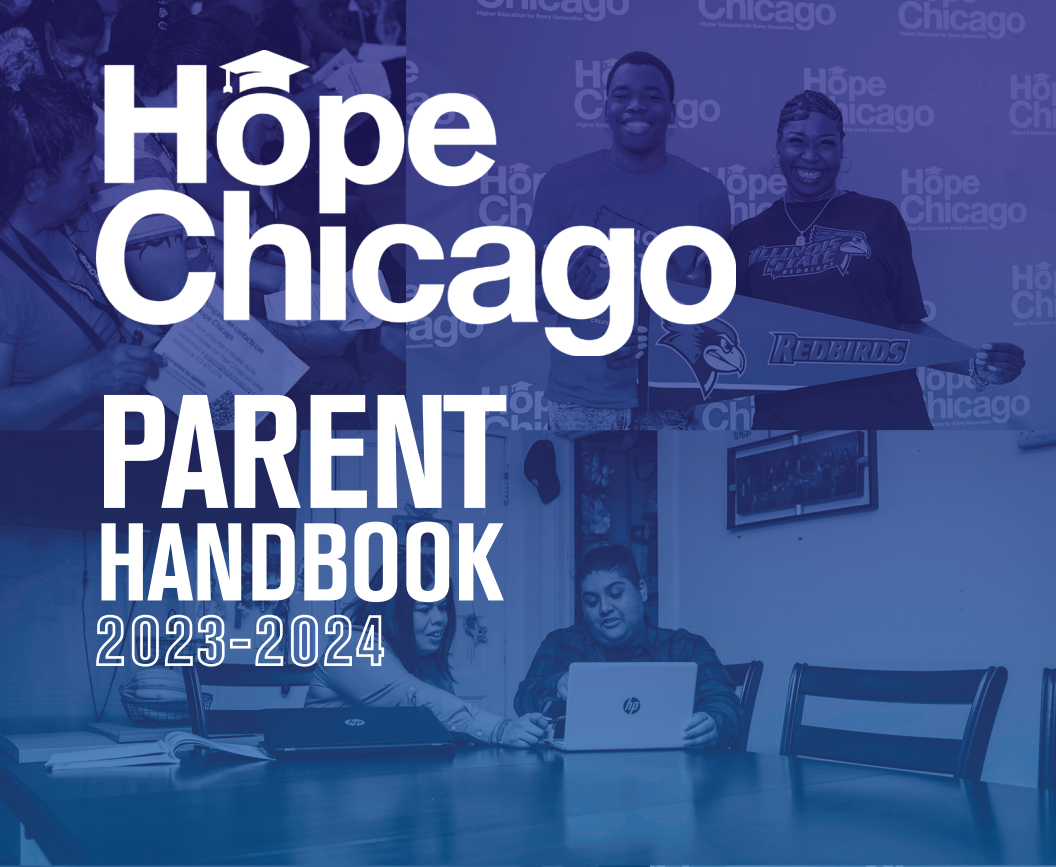




# Hope Chicago

## PARENT HANDBOOK 2023-2024





Dear Hope Parent:

I welcome you to the Hope Chicago family. Whether you are a Parent or Guardian of a current or future Hope Scholar, we are building a community for you! As a Hope Parent, you have access to many resources to support you, your Scholar, your family-and ultimately, your future should you decide to pursue becoming a Hope Parent Scholar.

The following pages will walk you through what being a Hope Parent Scholar means. I HOPE you will consider all we have to offer you through our partners. Should you choose to pursue a postsecondary or workforce pathway, know that just like with your child, “the whole city is behind you,” too.

Most importantly, know that being a part of the Hope Parent community is yours just because you are you. Hope Chicago believes in investing in whole families and whole communities. We offer free monthly events and resources designed with you in mind. I look forward to seeing you at one soon.

Best,

*Janice K. Jackson*

Dr. Janice K. Jackson  
CEO, Hope Chicago



# TABLE OF CONTENTS

Welcome to the Hope Chicago family! If you are a parent or guardian of a current, or future, Hope Scholar this handbook is for you.

- Important Terms 4
- About Hope Chicago 5
- Hope Parent Scholar Opportunity 6
- Timelines and Eligibility 7
- Hope Scholar Pathways 8-9
- Pathway Partners-Higher Education 10-11
- Pathway Partners-Workforce/Direct Hire 12-13

# Hope Chicago

## IMPORTANT TERMS

- **“Hope Scholar”** is a recent graduate from one of Hope Chicago’s partner high schools who has accepted the Hope Chicago scholarship and is currently enrolled full-time in a postsecondary program.
- **“Future Hope Scholar”** are students still enrolled in one of our partner high schools who are eligible for the Hope Chicago scholarship once they graduate.
- **“Hope Parent Scholar”** is parent/guardian of a Hope Scholar who has accepted the Hope Chicago parent/guardian scholarship and is enrolled in their own postsecondary pathway.
- **Community-based Anchor Partner or “CBAP”** are Hope Chicago’s partners that provide the coaching and advising for all Hope Parent Scholars. Our CBAPs are The Chicago Urban League and Instituto del Progreso Latino. When you register, you will select which partner you prefer to work with.
- **Hope Chicago defines postsecondary education broadly.** “Postsecondary” or “higher ed pathways” mean 2-year college degrees, 4-year college degrees, vocational programs that offer degrees or certificates, and even some job training programs that prepare you for specific jobs.



## ABOUT HOPE CHICAGO

Hope Chicago’s mission is to create pathways to success for multiple generations of Chicagoans through equitable access to higher education. By removing the barriers that hold low-income, first-generation college students back, Hope Chicago strives to shrink the racial wealth gap, uplifting families and entire communities in Chicago.

In February of 2022, Hope Chicago announced their first cohort of five partner Chicago high schools:

- Benito Juárez Community Academy
- Al Raby School for Community and Environment
- Morgan Park High School
- Noble Johnson College Prep, and
- Farragut Career Academy.

The promise of a debt-free college education was made to all 9th through 12th grade students enrolled at these partner schools on February 25, 2022—covering the graduating classes of 2022, 2023, 2024, and 2025. At this time, the Hope Chicago scholarship promise does not extend to the Class of 2026 and beyond at these five partner high schools.

# HOPE PARENT SCHOLAR OPPORTUNITY

Parents/Guardians of Hope Scholars have the opportunity to pursue their own postsecondary or career-focused path alongside their child. In addition to expanding your knowledge base, Hope Parent Scholars will benefit from holistic offerings including career exploration, skill-building, work-readiness, financial literacy and other trainings throughout the year. More information about eligibility and timelines are on the next page.

## Getting Started

The first step is to **Register**. To register, visit [www.hopechicago.org/parents](http://www.hopechicago.org/parents).

After registration, you will be contacted by one of our **CBAPs**. The CBAPs will explore your interests and goals, past work and education experience, and advise on what opportunities may be right for you.

**You will then explore opportunities and make a decision** about what pathway or opportunity you want to pursue. You can also decide they do not want to participate. You will be given coaching and support throughout the process.

**All parents who register will also be invited to FREE monthly events** on a variety of topics to help you, your family and your Scholar.



Scan to Register!



# TIMELINES AND ELIGIBILITY

For non-tuition or direct hire programs:

- All Hope Scholar parents are eligible at any time.

For tuition-based programs:

- You must:
  - » Be the parent or guardian of a xqHope Scholar who graduated from one of our five partner high schools and is enrolled full-time in a postsecondary program.
  - » Possess a high school diploma or GED, but not possess a bachelor's degree.
  - » Complete the FAFSA or Alternative Application for Financial Aid (financial aid application). You will be eligible even if you do not qualify for financial aid.
  - » Enroll within one year of your Scholar (child) beginning their postsecondary program.
  - » Maintain enrollment at a minimum of 15 credit hours per year and maintain satisfactory academic progress. Part-time enrollment is only supported at certain partners.
- Your Scholar (child) must:
  - » Continue full-time enrollment and satisfactory academic progress in their postsecondary program. If your Hope Scholar is not continually enrolled full-time, you will not be eligible for this opportunity.
- Additional notes:
  - » If you begin a GED program at the same time as your Scholar (child) enrolls in a postsecondary program, you will remain eligible for a tuition-based program after you complete your GED.

If you are a parent of a current Hope Scholar with immediate questions, please email [parentsupport@hopechicago.org](mailto:parentsupport@hopechicago.org) to find your answers.

# PARENT SCHOLAR PATHWAYS

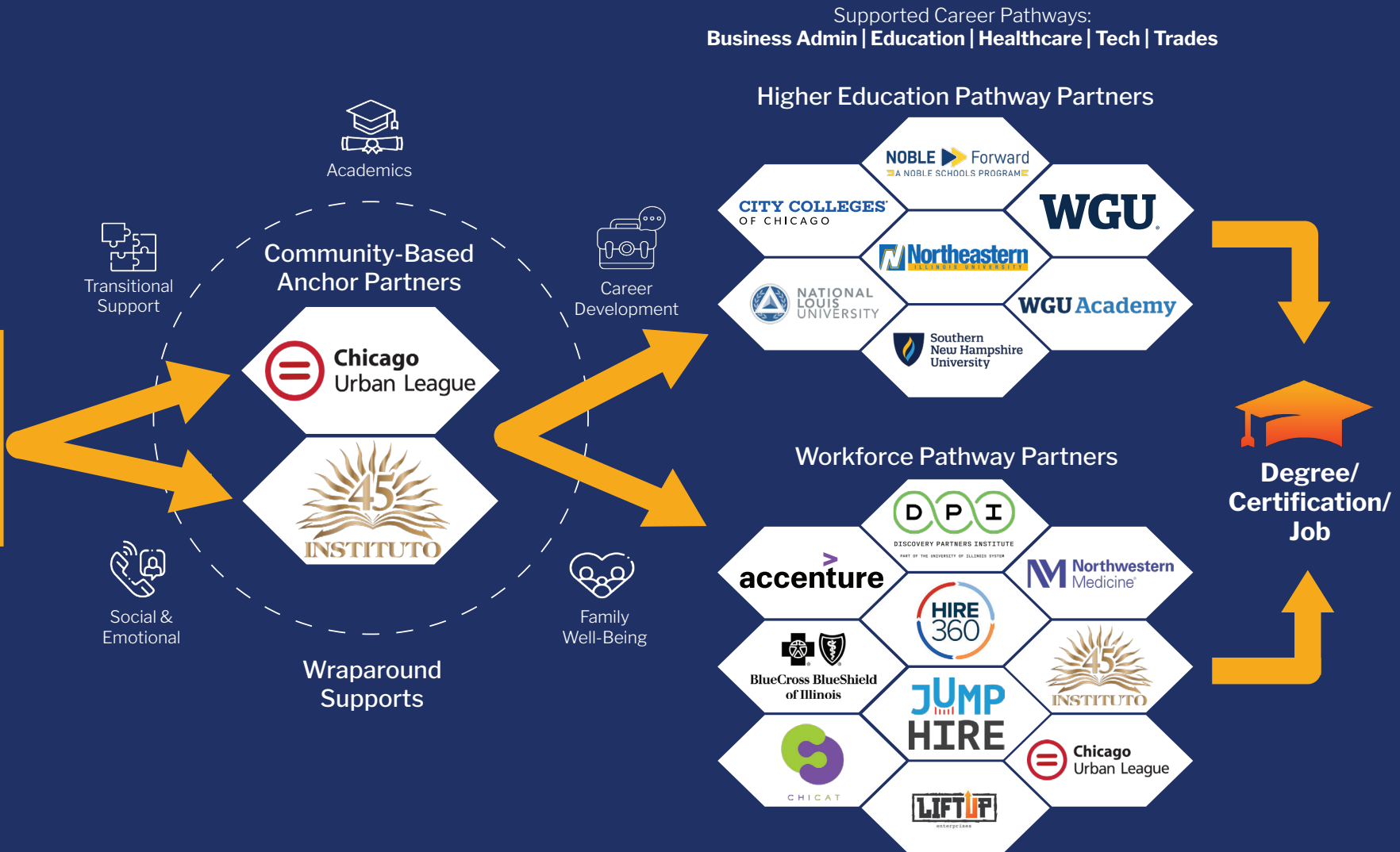


Hope Scholar



Hope Parent Scholar

Eligibility: Tuition-based postsecondary programs for Hope Parent Scholars require Hope Scholar's full-time enrollment and satisfactory academic progress.



# PATHWAY PARTNERS

## HIGHER EDUCATION

Hope Parent Scholars have access to 7 institutions to help meet the postsecondary and schedule and lifestyle needs. You can earn a variety of degrees or credentials from these partners in-person, online and at your own pace.



**CITY COLLEGES**  
OF CHICAGO

City Colleges of Chicago - Offers GED, credentials and Associates degrees in a variety of areas. They offer flexible enrollment options throughout the year, and they are a partner that you can attend part-time with a minimum of 15 credit hours required each year. Visit <https://colleges.ccc.edu/community-connector> to learn more.



**NATIONAL LOUIS UNIVERSITY**

National Louis University - Offers online and in-person Bachelor degrees. They offer traditional enrollment in Fall, Winter/Spring and Summer, but you must be enrolled full-time. Visit <https://nl.edu/> for more information.



**NOBLE**  **Forward**  
A NOBLE SCHOOLS PROGRAM

Noble Forward - Offers fully-online, self-paced, competency-based Bachelor and Associate degree programs through Southern New Hampshire University. You must complete a minimum of 5 classes per year to remain eligible. Visit <https://www.nobleforward.org/> to learn more.



**Northeastern**

Northeastern Illinois University - Offers a variety of online, in-person and nontraditional Bachelor degrees with additional options to turn previous work experience into credit hours. You must be enrolled full-time to qualify. Visit <https://www.neiu.edu/academics/our-colleges-and-departments/nontraditional-degree-programs> for more information.



**Southern New Hampshire University**

Southern New Hampshire University (SNHU) - Offers a fully online Bachelor degree in a variety of areas. They offer rolling admissions, but you must be enrolled full-time. Visit <http://www.snhu.edu/hopechicago> for more information.



**WGU**

Western Governors University - Offers Bachelor degrees in Business, Education, IT, Health & Nursing. They are fully online and offer 1st of the month enrollment opportunities. You can attend part-time with a minimum of 15 credit hours required each year. Visit <https://www.wgu.edu/> to learn more.



**WGU Academy**

Western Governors University Academy - Offers prerequisite classes for Parents interested in attending WGU, but need a class or 2 to get back in the swing of being a student. Your CBAP can make the introduction if you feel like you need this extra support.

# PATHWAY PARTNERS

## WORKFORCE/ DIRECT HIRE



Accenture - Offers paid apprenticeships in tech and UX/graphic design. Qualified candidates cannot have a Bachelor's degree, but must go through a traditional interview process.



Blue Cross Blue Shield of Illinois - Offers direct employment opportunities with full benefits in all areas from Customer Service to IT and beyond. Interested candidates must apply online, but will be fast tracked through the interview process. A minimum high school diploma is required. Additional compensation is available for bi-lingual individuals.



CHICAT - Offers workforce training and certifications in medical billing and other technology related fields.



Chicago Urban League - Offers a variety of workforce training and certification programs along with job counseling and connections to employers.



Discovery Partners Institute (DPI) - Offers paid training in software development and coding with a commitment to a paid apprenticeship upon completion of program.



HIRE 360 - Offers training and support needed to obtain apprenticeship for any individual interested in any Trade. Unionized positions are only available at specific times.



Instituto Del Progreso Latino - Offers nursing programs along with job counseling, connections to employers, financial counseling and access to other services.



JumpHire - Offers a variety of paid workforce training programs along with job counseling and connections to employers.



Lift Up Enterprises - Offers direct employment along with financial counseling and access to other services.



Northwestern Medicine/Northwestern Memorial Hospital - Offers direct employment and training opportunities with full benefits for individuals interested in nursing or various healthcare opportunities in hospitals or clinics. Interested candidates must apply online, but will be fast tracked through the interview process.

# NOTES





**JOIN THE HOPE CHICAGO PARENT  
COMMUNITY TODAY!**

**SCAN THE QR CODE TO REGISTER!**



[www.hopechicago.org/parents](http://www.hopechicago.org/parents)  
[parentsupport@hopechicago.org](mailto:parentsupport@hopechicago.org)  
Parent Support: 312-477-3181  
Main Phone: 312-477-3174

**Hope  
Chicago**